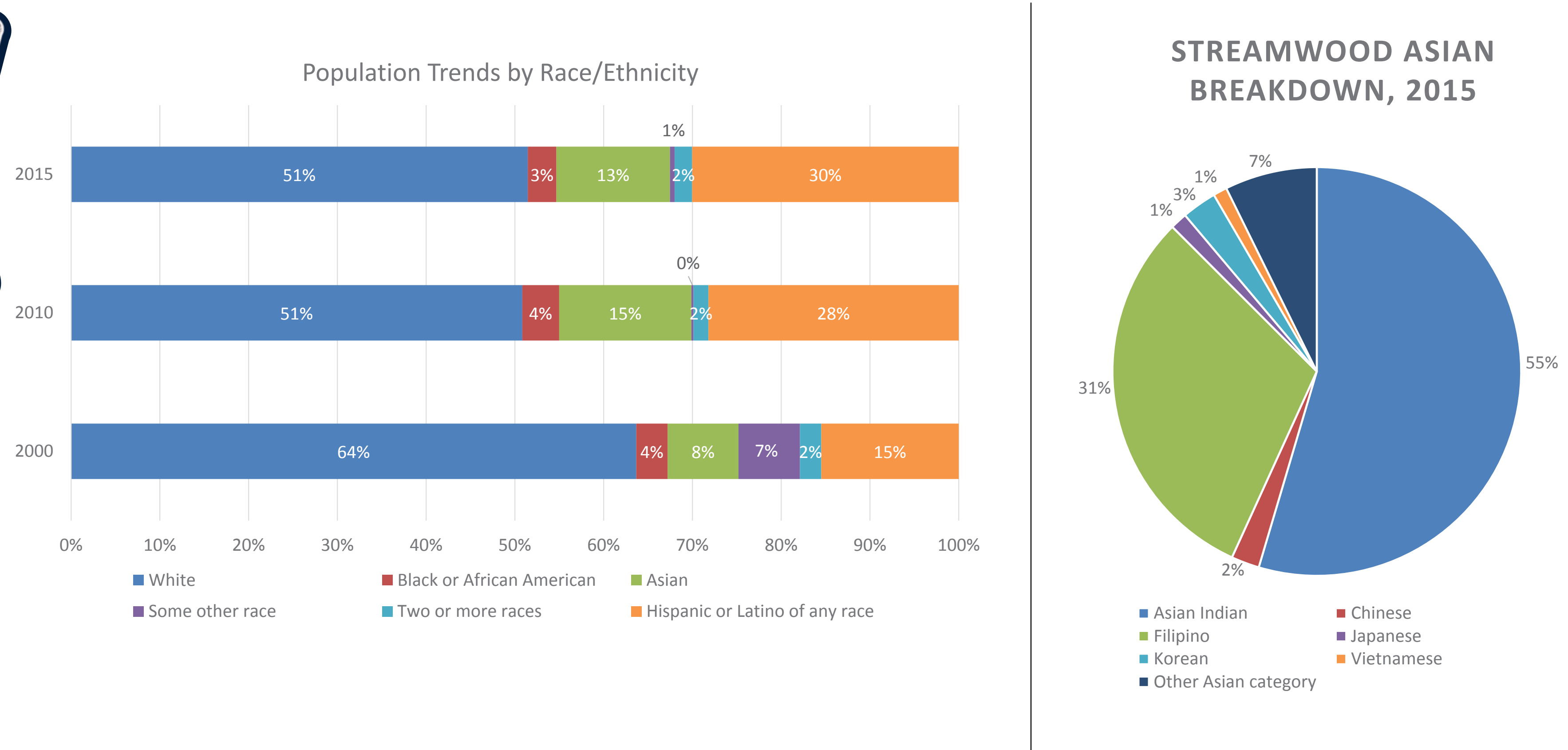




01 Demography: Race Trends

DRAFT

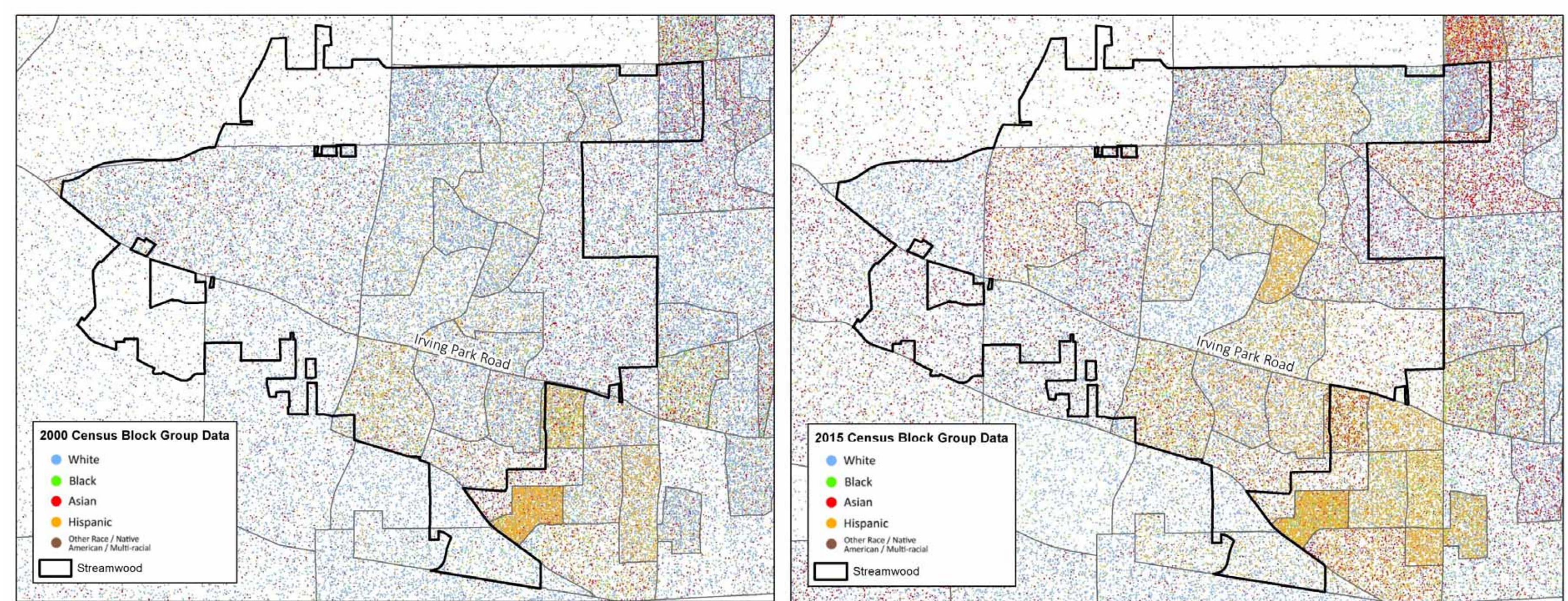
Streamwood has transitioned to being a more diverse community over the last 17 years. In 2000, 64% of the population identified as White, whereas only 51% identified as White in the 2015 Census. The change is a result of an increased percentage as people who identify as Hispanic, from 15% to 30%.



Source: 2015 5-Year American Community Survey, Tables B02001, DP05 and QT-P3

01 Demography: Ethnic Distribution 2000 - 2015

DRAFT



The map displays one dot for each person at the location they were counted during the 2000 Census. In 2000, Streamwood was predominately white. There were few concentrations of race or ethnicity within Streamwood, however there were pockets of Hispanic individuals on the south east side of the Village near Lake Street.

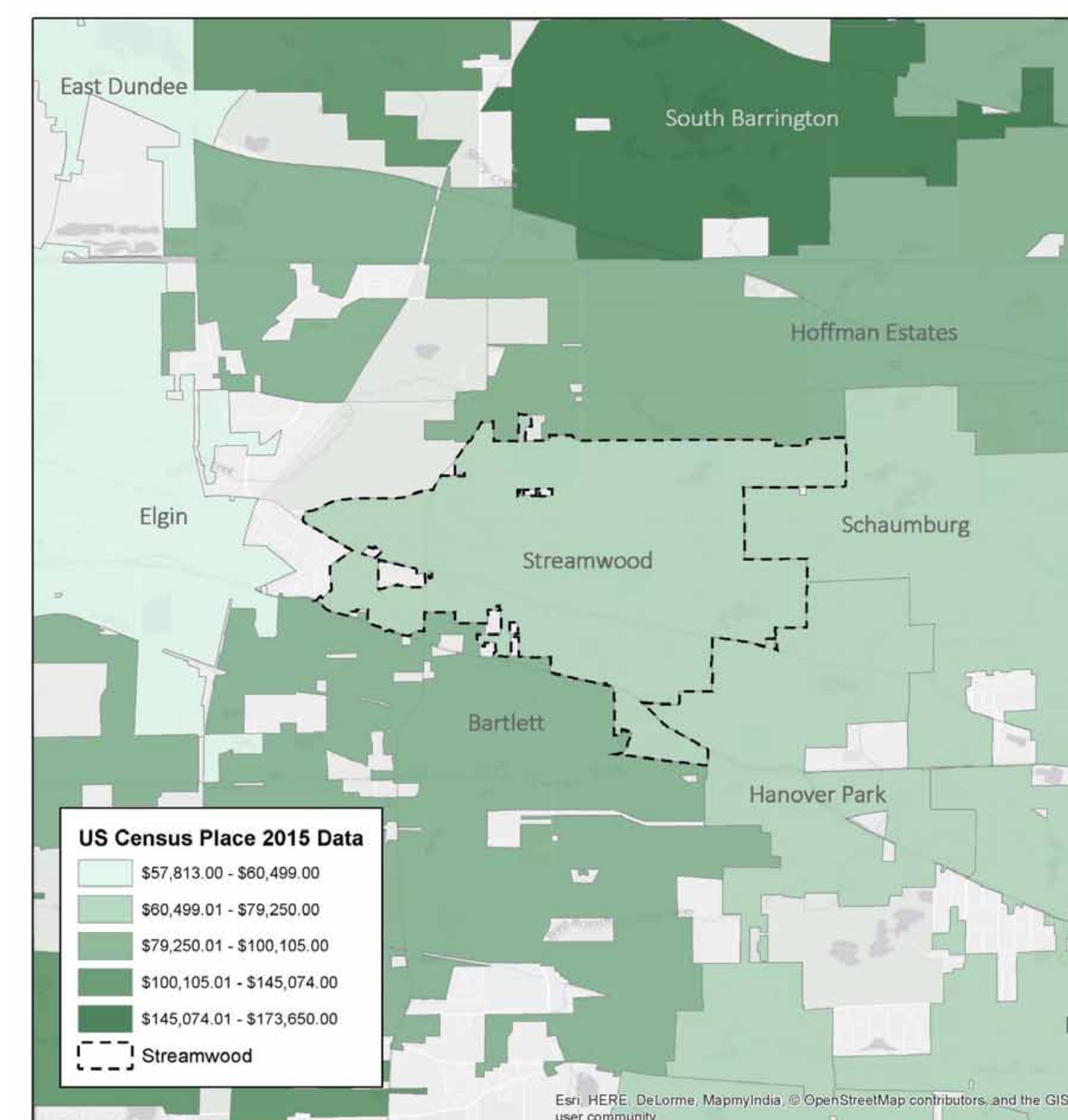
The map displays 40,865 dots within the Streamwood Village boundary, one for each person at the location they were counted during the 2015 Census. The distribution of race/ethnicity in 2015 is vastly different than in 2000. Over the 15 year span, the Hispanic population grew primarily on the east side of the Village.

Source: SB Friedman; US Census

01 Demography: Median Income

DRAFT

Streamwood has a high income relative to both Cook County and Illinois with a median household income of \$74,854. Relative to adjacent affluent villages, Streamwood appears to be a region with a modest household income figure.



MEDIAN HOUSEHOLD INCOME, 2015

Geography	Median Household Income
State of Illinois	\$57,574
Cook County	\$55,251
East Dundee	\$57,813
Elgin	\$60,499
Hanover Park	\$67,650
Schaumburg	\$74,086
Streamwood	\$74,854
Hoffman Estates	\$84,583
Bartlett	\$100,105
South Barrington	\$173,650

Source: ESRI; US Census; 2015 5-Year American Community Survey, Table S1903

DEMOGRAPHY

DRAFT

