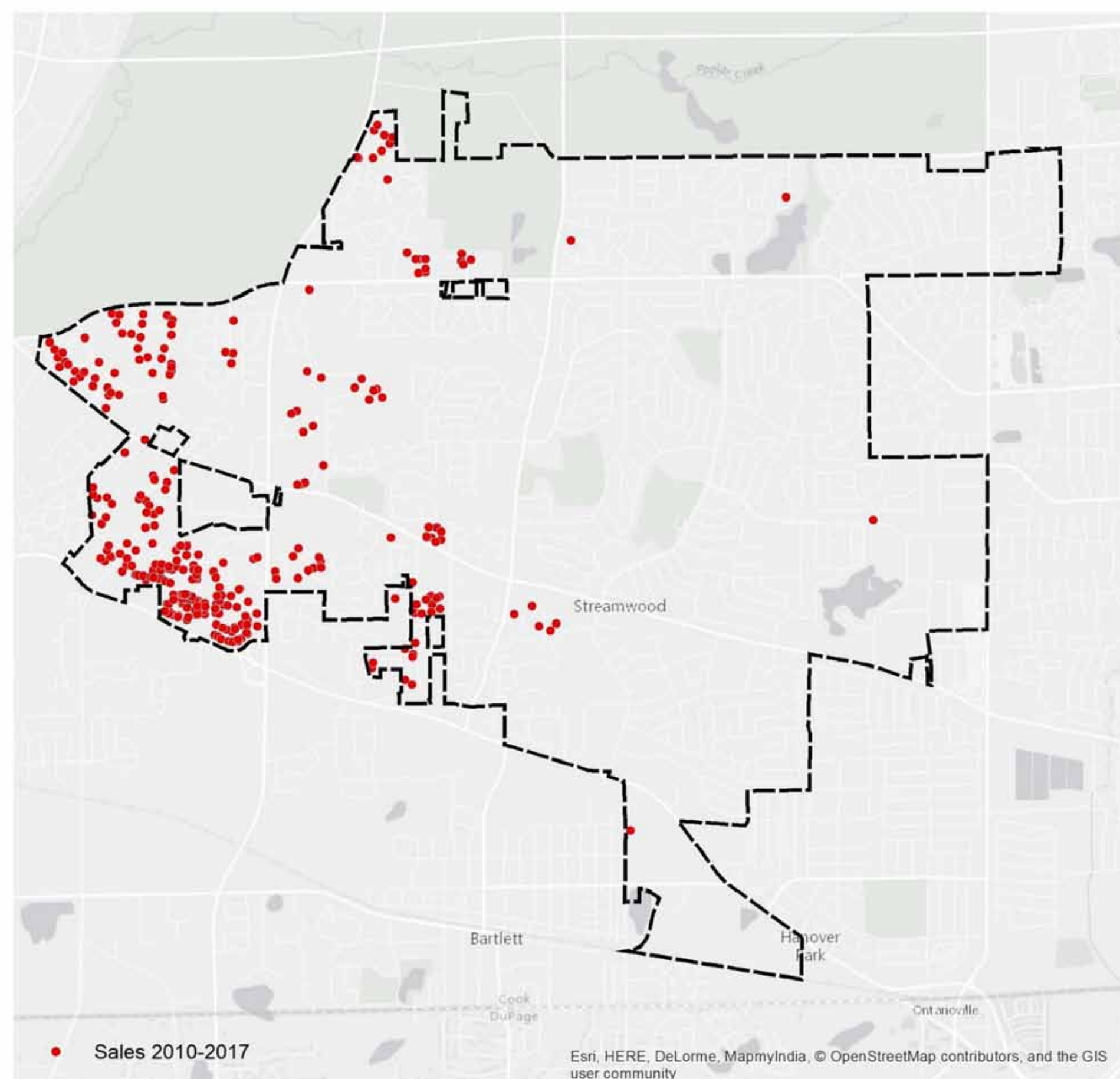
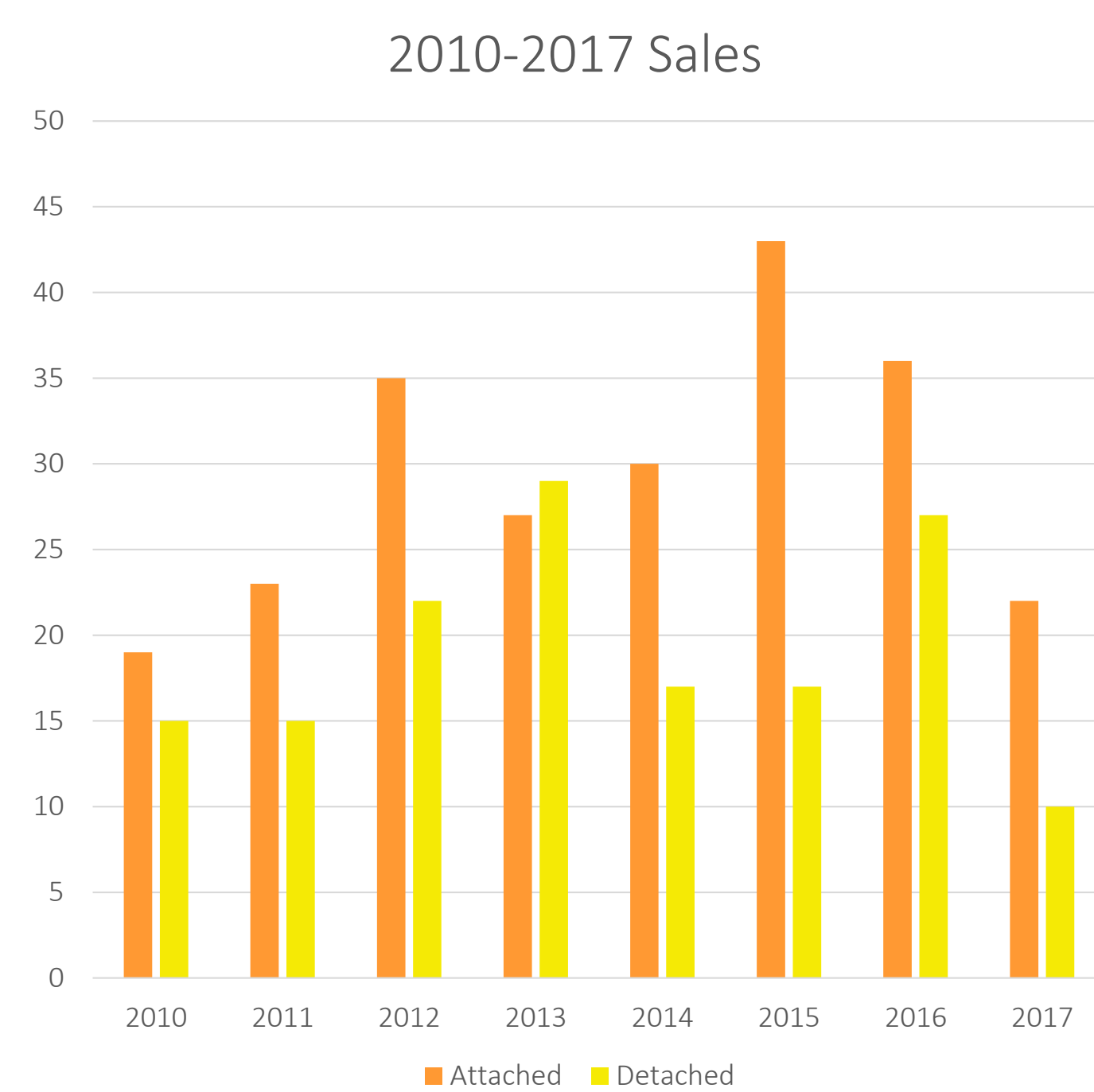


02 Housing: Housing Sales of Product Built Since 2000 DRAFT

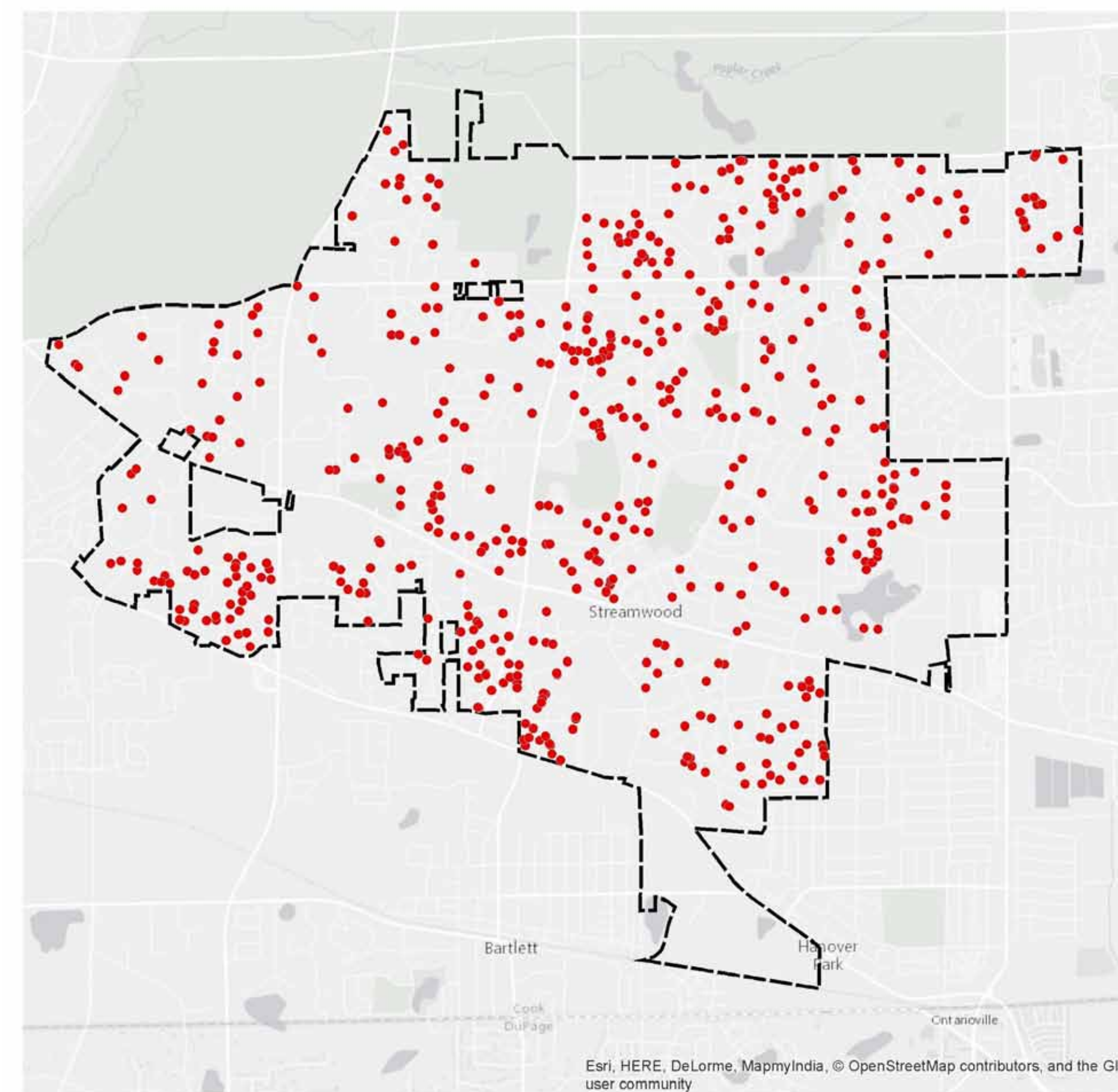


Nearly all housing property sales in Streamwood between 2010 and 2017 of newer housing stock (built 2000 or later) occurred on the west side of the Village. Sales for attached units outnumbered detached unit sales every year except 2013.

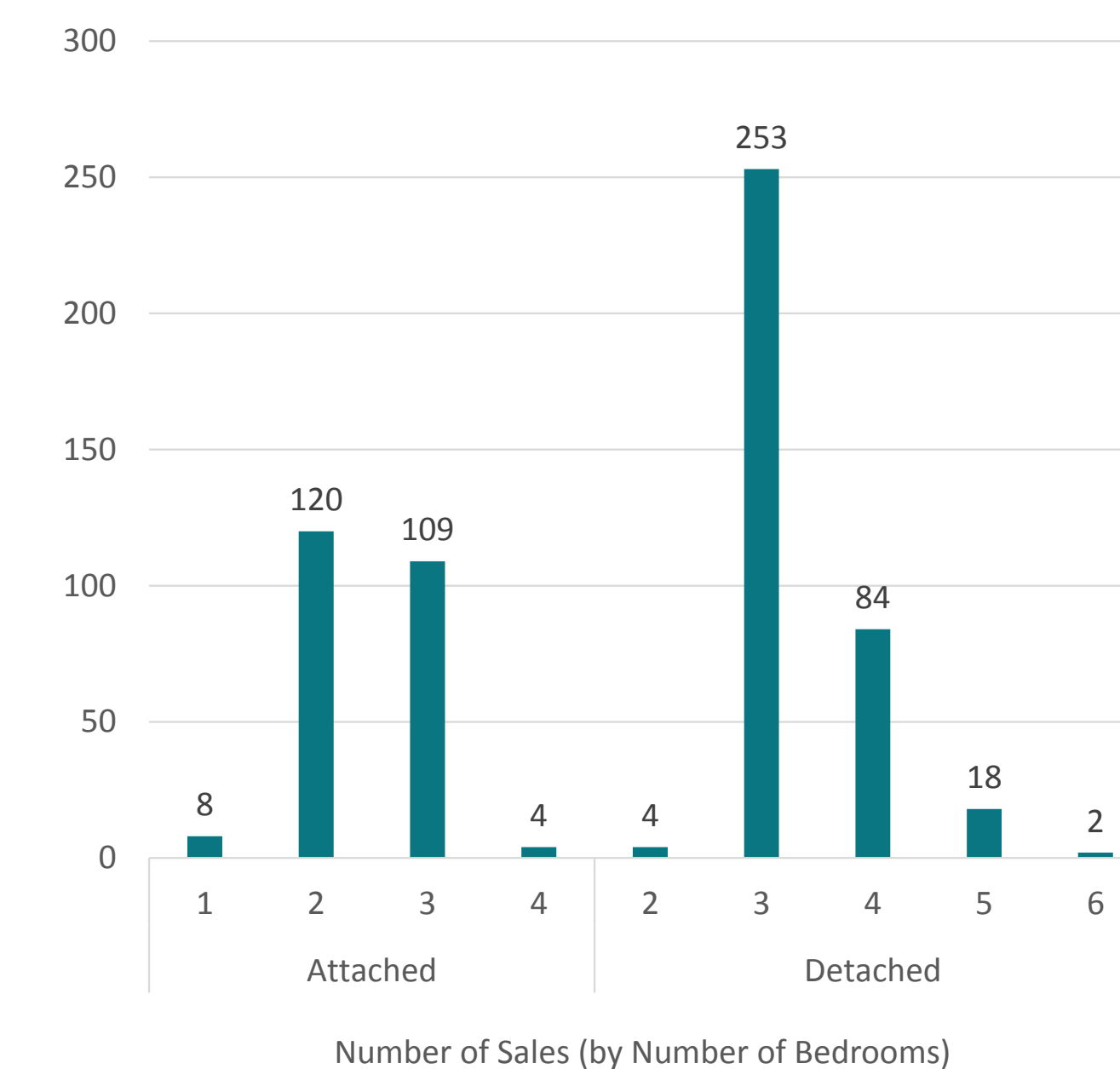


Source: MLS, SB Friedman

02 Housing: MLS Sales in 2015 of All Product DRAFT



There were 602 closings of either attached or detached single family homes in Streamwood throughout 2015. The largest share of home sales were three-bedroom detached homes.



Source: MLS, SB Friedman

02 Housing: Attached Single Family Housing DRAFT



Colonial Court
\$184,000
3 BR, 1860 SF



Monarch Drive
Built in 2001
Sold in 2017
3 BR, n/a SF



Yellowstone Drive
\$157,500
3 BR, 1632 SF
Built in 2005
Sold in 2012

Beds	Average SF [1]	Total Units	Mix %	Average selling price [2]	Price per SF
2	1,177	42	17.9%	\$183,405	\$156
3	1,438	187	79.6%	\$197,962	\$138
4	1,306	6	2.6%	\$210,396	\$161

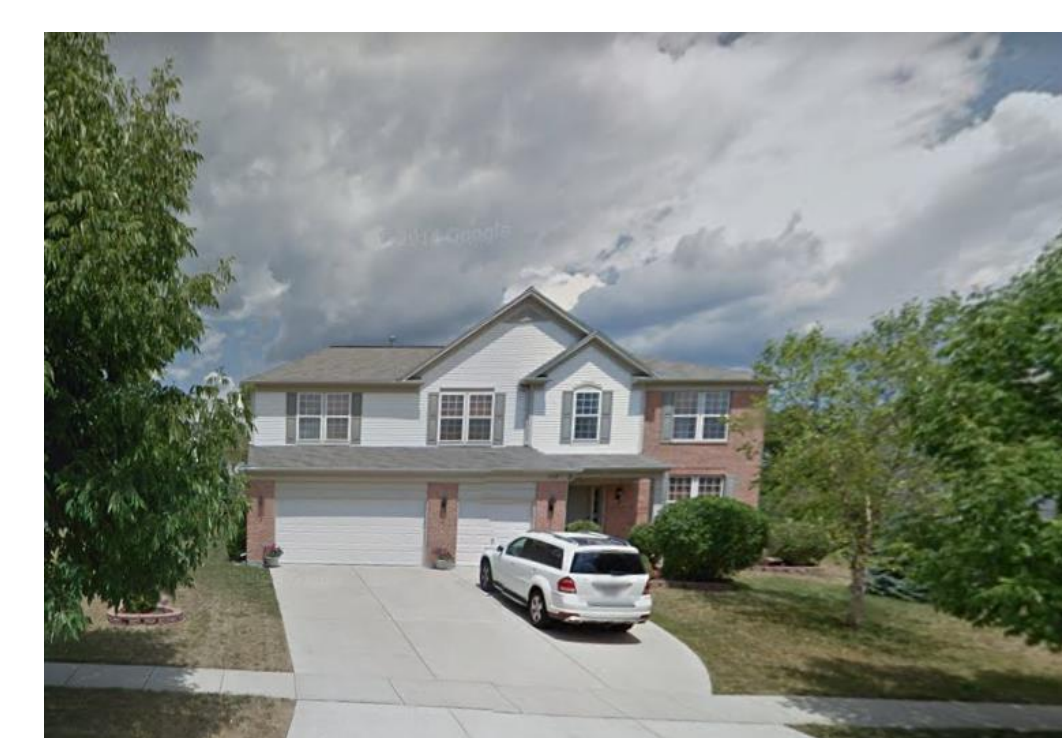
[1] Includes condominiums and townhomes
[2] Closings from 2010-present for product built since 2000

Source: MLS, SB Friedman

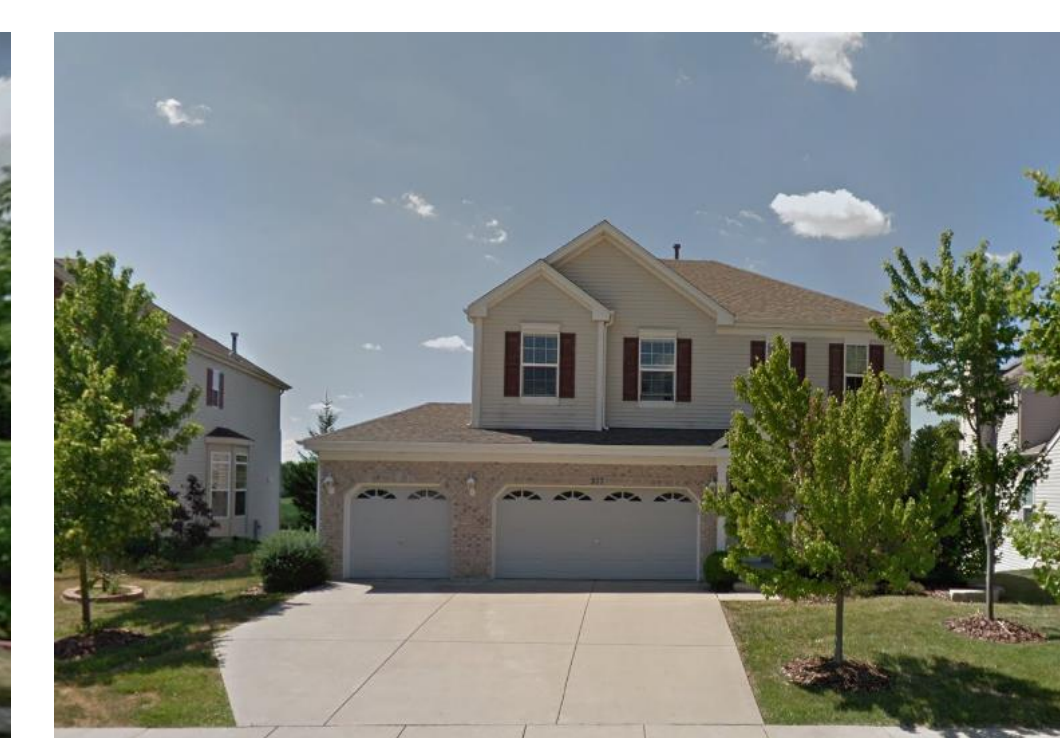
02 Housing: Detached Single Family Housing DRAFT



Blue Ridge Drive
\$443,000
4 BR, 3442 SF
Built in 2006
Sold in 2014



English Oak Lane
\$280,000
5 BR, 3582 SF
Built in 2001
Sold in 2016



Madison Drive
\$317,500
4 BR, 2677 SF
Built in 2004
Sold in 2015

Beds	Average SF [1]	Total Units	Mix %	Average selling price [2]	Price per SF
3	2,380	25	16.4%	\$299,636	\$126
4	2,862	114	75.0%	\$346,187	\$121
5	2,382	9	5.9%	\$358,778	\$151
6	3,843	4	2.6%	\$416,375	\$108

[1] Includes condominiums and townhomes
[2] Closings from 2010-present for product built since 2000

Source: MLS, SB Friedman

HOUSING

